

ERASMUS MUNDUS ACTION 2

Scholarships to Brazil


UNDERGRADUATE • DOCTORATE • POST-DOCTORATE
ACADEMIC/ADMINISTRATIVE STAFF



IBRASIL

INCLUSIVE & INNOVATIVE

TRAINING A NEW GENERATION OF HIGHLY QUALIFIED
TEACHERS, ENGINEERS AND RESEARCHERS
OPEN TO INCLUSIVE VALUES

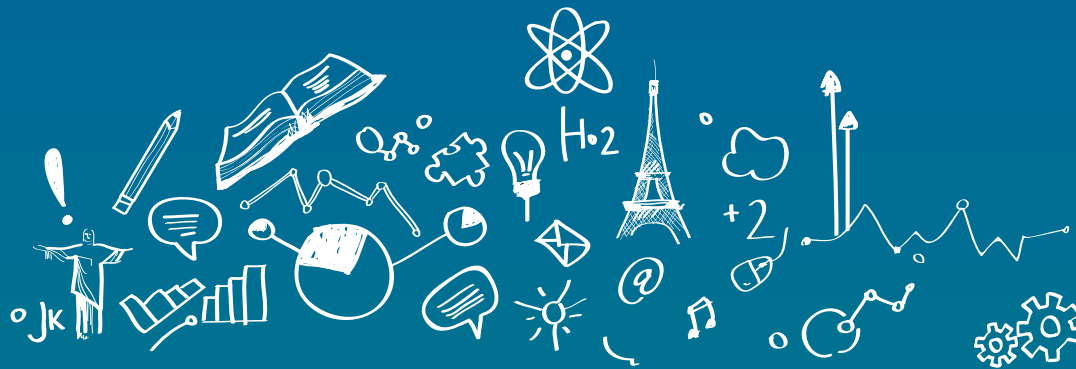


1st Cohort - November 2013 to February 2014



Erasmus
Mundus

<http://ibrasilmundus.eu>
ibrasil@univ-lille3.fr



WHAT IS THE IBRASIL PROGRAMME?

The IBRASIL is an Erasmus Mundus Action 2 programme funded by the European Commission, and co-coordinated by the Université Lille 3 (France) and the Universidade Estadual Paulista, UNESP, (Brazil). Scholarships are granted to European students for credits mobility and degree mobility within the Brazilian Higher Education Institutions members of the IBRASIL network.

- The eligible fields of study are: Engineering & Technology and Education & Teacher Training. No scholarships are available for Masters or students from other fields of study.
- Staff (academic and administrative) can only apply for one-month scholarship.
- The European Union financial support includes travel costs, insurance and tuition fees (when applicable).

WHAT ARE THE ELIGIBILITY REQUISITES THAT APPLY TO EUROPEAN CANDIDATES?

- Must be a national of one of the eligible European countries;
- Must have sufficient knowledge of the language of the courses or of one of the languages currently spoken in the host countries
- Undergraduate students must have successfully completed at least one year of studies at university/higher education level

WHERE CAN I UNDERTAKE MY MOBILITY?

Universidade Estadual Paulista « Julio de Mesquita Filho »
Universidade Federal do Tocantins
Universidade Federal do Vale do Sao Paulo
Universidade Federal do Mato Grosso do Sul
Universidade Federal de Minas Gerais
Universidade Federal de Santa Maria
Universidade Estadual de Feira de Santana
Universidade Federal do Rio Grande do Norte
Universidade Estadual do Maranhao
Universidade do Estado de Santa Catarina
Pontifícia Universidade Católica do Paraná

All the contact details of the partner institutions are available online: <http://ibrasilmundus.eu>

HOW AND WHEN CAN I APPLY?

The application form is available online: <http://ibrasilmundus.eu>
November 2013 to February 2014

COORDINATOR:

Université Lille 3, France
E-mail: ibrasil@univ-lille3.fr

CO-COORDINATOR :

UNESP, Brazil
Email: erasmus@reitoria.unesp.br